



ReLiquefier

PPMS

PID

GasMon32.exe (C:\QdPpms\Tools)



PPMS

1

300K

Puck

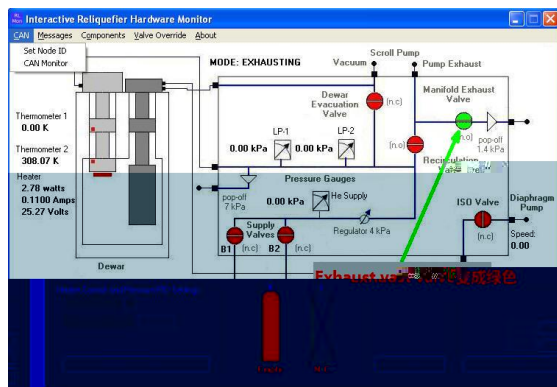
Purge/Seal shutdown

standby

2

Reliquefier

Exhaust





3 **GasMon32.exe** (C:\QdPpms\tools) File

Advanced **quandsn** Config

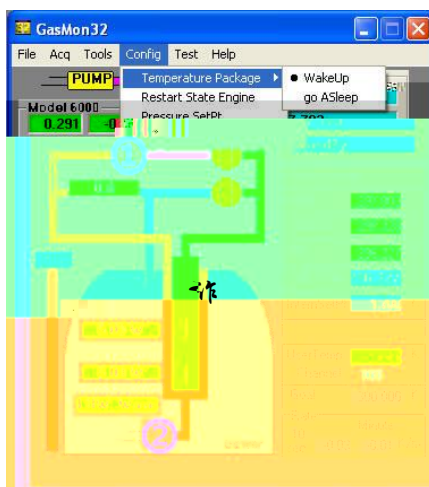
Temperature Package go asleep

State engine is asleep

4 () **零度**

() **High** 5

90度



5 5 500~750 cc/min

浮球式流量计使用前确认其能正常工作，简单的判断办法是倒置流量计浮球能轻松落下。如果流量计有问题，用户可自行拆开，用酒精和棉球等清理干净。

6 **GasMon32.exe**

7